

HIGH VOLUME HOT WATER



The Budzar Industries High Volume Hot Water Systems are engineered to provide accurate, reliable and cost effective temperature control for your company's mill, calendar, reactor or any other high-capacity process load.

The High Volume Hot Water Unit is available for use with plant steam or electricity as the heat source. Both steam and electric units come in single and multi-zone configurations. This series is designed for industrial processes requiring fluid temperatures up to 250°F.

Budzar Industries also designs and manufactures specialized equipment for non-standard applications. Our engineers have extensive experience in process chilling and heating applications for such industries as: rubber, paper, plastic, chemical, food, pharmaceutical and metal working. We take the time to understand your current and future needs and design solutions targeting at high quality and fast payback.

engineering **PRECISION**

EXCELLENT RETURN ON INVESTMENT

- Each Budzar Industries unit is designed to maximize the productivity of your process. Budzar Industries quality and reliability provide excellent value for each dollar invested.
- Reliable temperature control improves process consistency, reduces scrap, speeds start-up and increases production rates.

LOW COST, SIMPLE OPERATION AND MAINTENANCE

- Solid-state, microprocessor-based controls provide reliable accurate operation.
- Heavy-duty structural steel open framework for rugged use and easy accesses to all components.
- A.S.M.E. constructed shell and "U" tube heat Exchangers insure mechanical integrity
- Pneumatic or electric modulating control valves for precise and reliable temperature control
- Stand-by pumps are available to reduce down time
- A limited rate of change temperature controller is available to control the rate of temperature changes.

QUICK AND EASY INSTALLATION

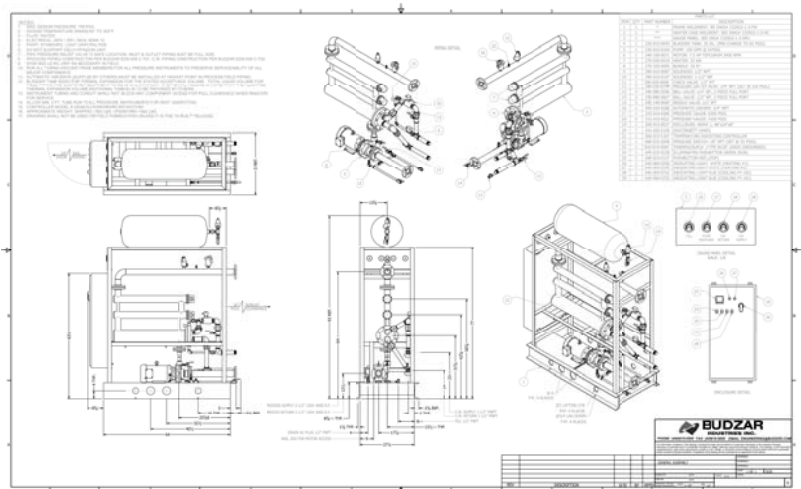
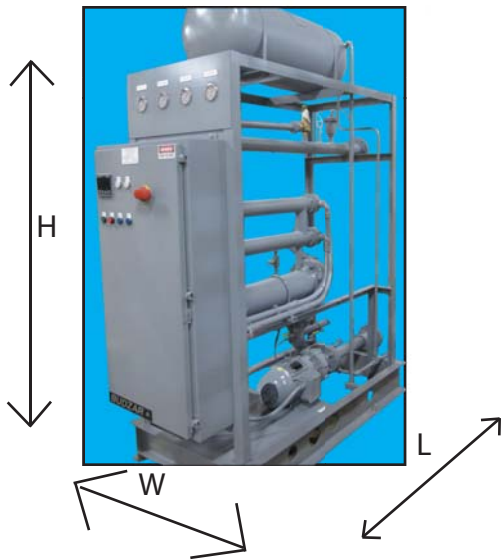
- Single point connections for all utilities
- All units are factory tested prior to shipment

HIGH VOLUME HOT WATER

Mode	Heating Sq. Feet ⁴	Flow GPM @ 50 PSI	HP	FLA @ 460V Steam	Cooling Sq. Feet ⁴	Approximate Dimension L x W x H ⁵	Weight LBS
1WT-S50-C	15	50	3	5	15	60 x 48 x 72	900
1WT-S75-C	15	75	5	8	15	60 x 48 x 72	1000
1WT-S100-C	15	100	7.5	12	15	60 x 48 x 72	1200
1WT-S150-C	35	150	7.5	12	35	60 x 48 x 72	1400
1WT-S200-C	35	200	10	15	35	60 x 48 x 72	1600
1WT-S250-C	35	250	15	22	35	60 x 48 x 72	1800
1WT-S300-C	82	300	15	22	82	60 x 48 x 72	2000
2WT-S50-C	15	50	3	10	15	60 x 84 x 72	1800
2WT-S75-C	15	75	5	16	15	60 x 84 x 72	2000
2WT-S100-C	15	100	7.5	23	15	60 x 84 x 72	2400
2WT-S150-C	35	150	7.5	23	35	60 x 84 x 72	2800
2WT-S200-C	35	200	10	29	35	60 x 84 x 72	3200
2WT-S250-C	35	250	15	43	35	60 x 84 x 72	3600
2WT-S300-C	82	300	15	43	82	60 x 84 x 72	4000

- 1 - System Design Pressure - 150 PSI
- 2 - Maximum Steam Pressure - 125 PSI
- 3 - Maximum Cooling Water Pressure - 125 PSI
- 4 - Sizing can vary per application
- 5 - Based on close coupled pump arrangement

Units also available at 80 PSI (consult factory)
 Budzar Industries reserves the right to discontinue or change specifications without notice, consistent with sound engineering practice and current industrial standards



Budzar Industries reserves the right to discontinue or change specifications without notice, consistent with sound engineering practice and current industrial standards.

Units Available from Budzar Industries



Low Temperature
Process Chillers to -85°C



Clean Steam
Sampling Cart



Standard and Custom
Temperature Control Modules



Air-Cooled Outdoor
Packaged Chiller



CIP
Systems



Reactor Temperature Control Systems
from -85°C to +200°C



38241 Willoughby Pkwy. • Willoughby, OH 44094
 440-918-0505 • www.Budzar.com • Sales@Budzar.com

